

*It's a Roman Holiday in Wellington  
Featuring the Club Goddesses*



*Roman Holiday Planners*



*Roman Holiday Winners  
Low Net Tournament*

**A Flight**

- 1<sup>st</sup> – Pat Totten – 74
- 2<sup>nd</sup> - Lanie Campbell – 76
- 3<sup>rd</sup> – Nancy Knopp – 78
- (scorecard playoff w/ Barb Anthem)
- Closest to Pin – Sharon Emrich

**B Flight**

- 1<sup>st</sup> – Becky Beddow – 70
- 2<sup>nd</sup> – Nadine Roberts – 71
- 3<sup>rd</sup> – Melissa Rodriguez – 80
- Closest to Pin – Becky Beddow

**C Flight**

- 1<sup>st</sup> – Peggy King - 72
- 2<sup>nd</sup> – Jan Yaeger - 74
- 3<sup>rd</sup> – Jan Schraeder - 80
- Longest Putt – Vicki Shue

A fun and very enjoyable, but HOT day. The pizza, wings, cookies, and brownies made the heat more bearable. And the friendly and helpful staff at Wellington just made the day better!!

A  
FLT



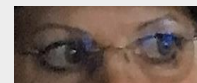
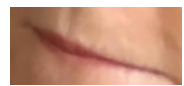
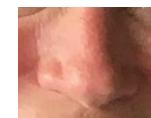
B  
FLT



C  
FLT



The photographer was not able to get a picture of everyone... She apologizes to the ones she missed. It just got a little hectic by the end of the day.



Whose nose, mouth and eyes do you see???

They belong to three different people.

Answers later!